

SONIK[®]

XTRACTOR PRO

5000

OWNERS MANUAL

WWW.SONIKSPORTS.COM

FEATURES

- GEAR RATIO 4.7:1
- WORMSHAFT GEAR SYSTEM
- FLOATING ROTOR LINE GUARD
- 'QUIK-CLIK' FOLDING HANDLE WITH WOOD GRIP
- TWIN SPRING-LOADED CAPTIVE LINE CLIPS
- 'QUICK-TORQUE' DRAG SYSTEM
- GRAPHITE BODY AND ROTOR
- SLEEK MATT BLACK FINISH
- INSTANT ANTI-REVERSE
- OVERSIZE TWIST FREE LINE ROLLER
- MICRO LINE LAY ADJUSTMENT WASHERS



Introduction

Sonik reels, when properly maintained, should provide years of trouble free performance. Before using your new reel, please take a few moments to read the warranty information and maintenance guidelines to ensure optimum performance.

Warranty

All Sonik reels are covered by a full one year manufacturer's warranty from the date of the purchase for the original owner, to cover any defects in materials or workmanship. Please keep your purchase receipt and register your warranty within 30 days of date of purchase by logging onto our website www.soniksports.com and follow instructions under the heading 'Warranty'. Alternatively you can register by calling our office and asking for our Customer Service department.

To request a warranty repair on your Sonik reel please follow details on our website under 'Warranty' or send an email to customerservices@soniksports.com. Alternatively you can call our office to request a repair or if you require spare parts (including spools and handles).

Maintenance

As with any piece of precision product, your Sonik reel will require regular maintenance and care. Failure to do this can void your warranty. To ensure your reel continues to perform at peak efficiency it should be cleaned and lubricated on a regular basis, using waterproof grease/oil to the moving parts. For further instructions/tips on reel maintenance please check our website.

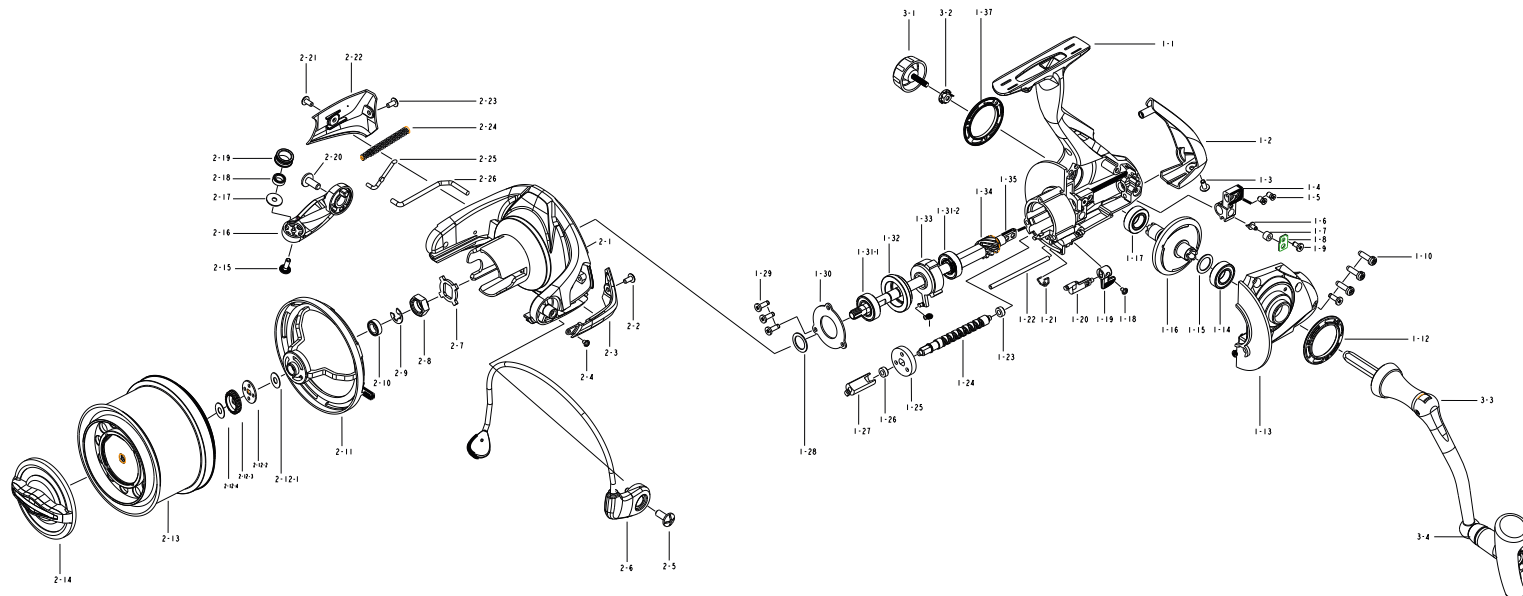
SONIK SPORTS LIMITED
CONISTON COURT
RIVERSIDE BUSINESS PARK
BLYTH, NORTHUMBERLAND
NE24 4RP
UNITED KINGDOM



TEL: +44 (0) 1670 798910
CUSTOMERSERVICES@SONIKSPORTS.COM

WWW.SONIKSPORTS.COM

XTRACTOR PRO 5000



No.: PARTS NAME:

1-1. MAIN BODY
1-2. BODY COVER
1-3. SCREW
1-4. SLIDER
1-5. SCREW
1-6. LINE GUIDE PIN
1-7. BUSHING
1-8. LINE GUIDE PIN COVER
1-9. SCREW
1-10. SCREW
1-12. BODY COVER
1-13. MAIN COVER
1-14. BALL BEARING
1-15. WASHER
1-16. MAIN GEAR
1-17. BALL BEARING
1-18. SCREW
1-19. ANTI-REVERSE BUTTON
1-20. ANTI-REVERSE LEVER
1-21. SPRING
1-22. OSCILLATING SLIDER PIN
1-23. COPPER BUSH
1-24. WORM SHAFT

No.: PARTS NAME:

1-25. DRIVE GEAR
1-26. COPPER BUSH
1-27. WORM SHAFT COLLAR
1-28. WASHER
1-29. SCREW
1-30. OWC COVER
1-31-1. BALL BEARING
1-31-2. BALL BEARING
1-32. BUSHING
1-33. ONE WAY CLUTCH
1-34. PINION GEAR
1-35. MAIN SHAFT
1-37. BODY COVER
2-1. ROTOR
2-2. SCREW
2-3. ROTOR COVER
2-4. SCREW
2-5. SCREW
2-6. BAIL ARM
2-7. FIX COVER
2-8. ROTOR NUT
2-9. RETAINING RING
2-10. COPPER BUSH

No.: PARTS NAME:

2-11. LINE GUARD
2-12-1. WASHER
2-12-2. FIX WASHER
2-12-3. CLICK SEAT
2-12-4. WASHER
2-13. SPOOL ASSEMBLY
2-14. DRAG BUTTON ASSEMBLY
2-15. SCREW
2-16. BAIL ARM
2-17. WASHER
2-18. BALL BEARING
2-19. LINE ROLLER
2-20. SCREW
2-21. SCREW
2-22. ROTOR COVER
2-23. SCREW
2-24. SPRING
2-25. BAIL TRIP SHAFT
2-26. BAIL TRIP SHAFT
3-1. HANDLE COVER
3-2. WASHER
3-3. HANDLE ASSEMBLY